

MYOB EXO Business

Release Notes

2015.5

Contents

Introduction	1
What's New in this Release?	1
Installation	2
Pre-Install Requirements.....	2
Database Server.....	2
Client Workstation	3
Other Requirements	3
Installing MYOB EXO Business	4
Post-Installation	11
Logging in to EXO Business	11
Installing EXO Business Services	12
Setting up the Services	15
New Features	17
Changes to Supported Platforms	17
Updates to Business Alerts.....	17
Updates to GL Searching	18
GL Search Templates	18
New Column on Subaccounts.....	18
Bank Feeds in Bank Reconciliations.....	19
Performing a Bank Feeds Reconciliation	19
Unmatched Transactions.....	20
Other Reconciliation Methods	20
Company Search Templates in EXO CRM	21
New Get Profile Functions.....	22
Documents on Inwards Goods	22
Integrated Cashbook Update	23
New Zealand Business Number.....	23

Job Costing Updates	24
Workflow Constraints	24
Attaching Multiple Lines to a Kit	24
Writing off Lines when Crediting a Job.....	24
Update to the Ledger Posting Process	24
Resolved Issues	25
EXO Business Core.....	25
EXO CRM	25
Known Issues	26
Appendix 1: Profile Settings	28

Introduction

What's New in this Release?

The 2015.5 release includes a range of general improvements across the EXO Business system. Search templates can now be defined for General Ledger accounts and used on GL account search windows throughout the system. Search Templates are also now available for the Companies search screen in EXO CRM.

The Bank Feeds feature introduced in 2015.4 has been enhanced and extended by incorporating the Bank Reconciliation process—transaction matches made with Bank Feeds now form the direct basis of an automated bank reconciliation. This makes this version a must-have for Bank Feeds users.

Other changes to the system include new logic for Business Alerts as a prelude to further upcoming enhancements and expansion of this feature in 2016; the completion of document management functionality to the purchasing process, with a Documents tab on the Inwards Goods Receipt and Inwards Goods Costing windows; and some ongoing improvements to the EXO Job Costing module workflows.

The purpose of this document is to provide essential information on the installation and use of this release:

- The **Installation** section provides an overview of the installation process, including pre-installation requirements and post installation steps.
- The **New Features** section describes all new features introduced in this release.
- The **Resolved Issues** section describes all issues that have been addressed by this release.
- The **Known Issues** section details any issues in this release that have been identified as requiring attention.
- The **New Profile Settings** appendix at the end of this document summarises all changes to EXO Business profile settings included in this release.

Installation

Pre-Install Requirements

Minimum system requirements for PCs running MYOB EXO Business components are detailed below. Full details of requirements and supported operating systems for MYOB EXO Business are available on the [Minimum System Requirements page on the MYOB website](#).

The performance of the EXO Business system is not assured if these requirements are not met. Similarly, performance cannot be assured if the EXO Business system is installed on a server that is already under load from other processes, or a RDBMS that is not suitable for the organization's volume of data (see "SQL Express" on page 3).

Database Server

Any server where an MYOB EXO Business database is installed should meet the following minimum requirements:

- Windows Server 2008, Windows Server 2012
- The latest Service Pack for the Windows operating system
- Intel Pentium® 4 2.4Ghz processor (or equivalent)
- 2 GB RAM
- 20 GB of hard disk space + 10 MB per user
- Microsoft Data Access Components (MDAC) 2.8 or later
- A supported version of Microsoft SQL Server:
 - Microsoft SQL Server 2008 R2/SQL 2008 R2 Express Edition
 - Microsoft SQL Server 2012/SQL 2012 Express Edition (however, see the Known Issue on page 27).
 - Microsoft SQL Server 2014/SQL 2014 Express Edition
- The latest Service Pack for the version of SQL Server you are using

MYOB EXO Business 2015.5 works best on Microsoft SQL Server 2014 (version 12.0.2495.0) Standard or Enterprise editions.

SQL Server

Microsoft SQL Server must be present on the EXO Business Database Server. If you want to use a specific edition of SQL Server, make sure it is installed before running the Installation Wizard. If SQL Server is not installed, the EXO Business Installation Wizard can install SQL Server 2008 R2 SP1 Express Edition (SQL Express) as part of the installation process (see page 7). Whichever version of SQL Server you use, it must be set up to use Mixed Mode authentication.

The blank and demo databases supplied with EXO Business have their compatibility levels set to “SQL Server 2008 (100)”. When upgrading from a previous version of EXO Business, database compatibility levels are updated automatically as follows:

- SQL Server 2008 and later databases are set to compatibility level 100.
- Older versions of SQL Server are not updated.

See the following web page for information on compatibility levels:

<http://msdn.microsoft.com/en-us/library/bb510680.aspx>

SQL Express

SQL Express may not be suitable for businesses with many users. SQL Express has limits on the amount of RAM and number of processors it can use, which affects the number of concurrent users that the EXO Business database can support. See the following MSDN article for more information:

<http://msdn.microsoft.com/en-us/library/cc645993.aspx>

Client Workstation

Any client workstation running the MYOB EXO Business application modules should meet the following minimum requirements:

- Windows 7 Enterprise, Windows 7 Professional, Windows 7 Ultimate, Windows 8
- The latest Service Pack for the Windows operating system
- Intel Pentium® 4 1.3 GHz processor (or equivalent)
- Hard disk space as required for the operating system
- 16-bit colour, 1024×768 screen resolution

Other Requirements

Certain features of MYOB EXO Business require one or more of the following:

- Internet access
- Microsoft Internet Explorer 7.0 or later
- Adobe® Acrobat Reader 7.0 or later

Microsoft Office connection requires Microsoft Word/Excel 2010 to 2013.

Contact synchronisation requires Microsoft Outlook 2010 to 2013.

MYOB EXO Business 2015.5 requires **ExonetLib.dll** version 2015.2.0 or later. Version 2015.2.0 is included with this release.

When installing manually on 64-bit operating systems, the file **RwEasyMAPI64.exe** must be copied from the **Supporting Files\RapWare** folder of the EXO Business DVD to the install directory. Register this file by running `RwEasyMAPI64.exe /regserver` from a command prompt.

Installing MYOB EXO Business

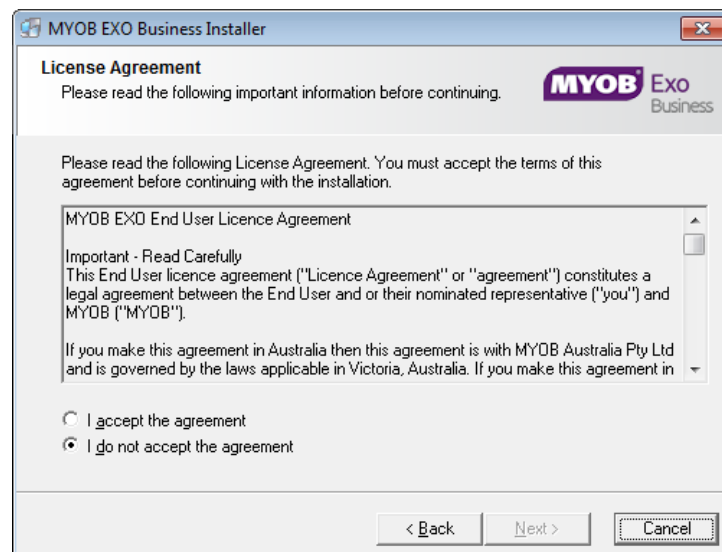
Note: Before you install this release, we recommend you take the precaution of backing up your data. Ensure there are no EXO Business modules running, locally or on your network.

To perform the installation:

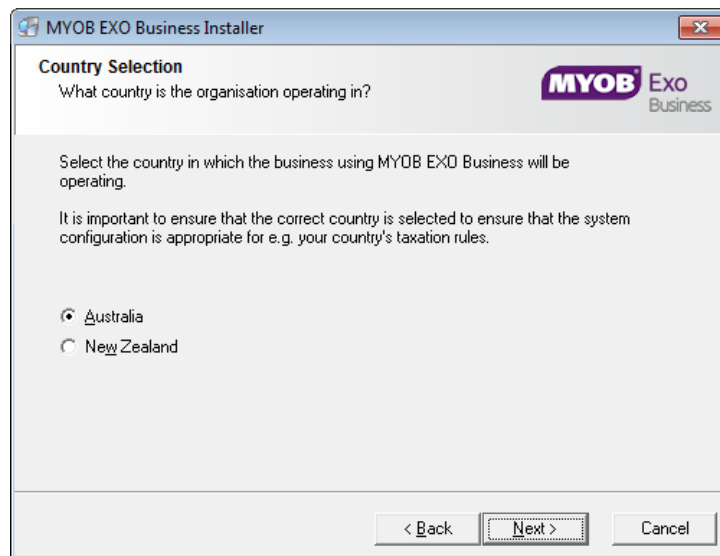
1. Insert the MYOB EXO Business CD and select **Install MYOB EXO Business** on the Install tab. If the install menu does not run automatically, run the **ExoBusinessInstaller.exe** program in the **Supporting Files** directory of the CD.
2. Click **Next** on the Welcome screen.



3. Read the licence agreement, then select **I accept the agreement** and click **Next**.



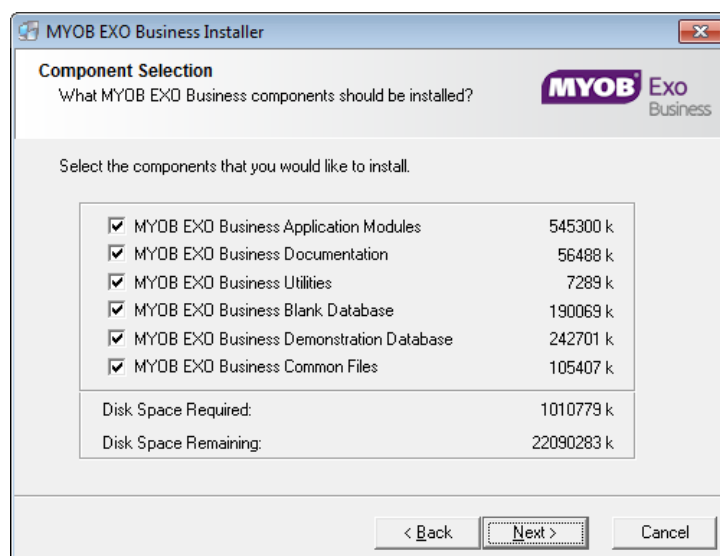
4. Select the country you are based in and click **Next**.



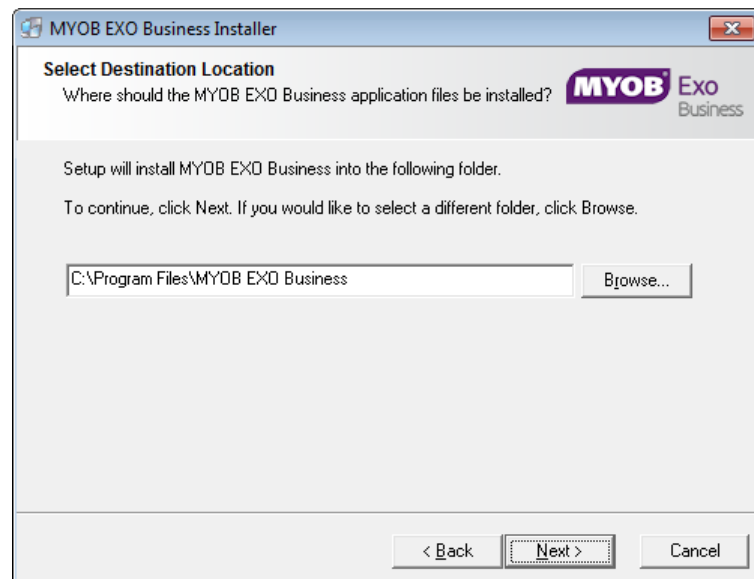
Note: Your selection here affects certain country-specific default settings that are set up during the install, e.g. tax rates and banks.

5. Select the components to install. Choose from:
 - MYOB EXO Business Application Modules
 - Documentation files
 - EXO Business utilities
 - A blank “live” MYOB EXO Business Database
 - A pre-configured demonstration database
 - EXO Business Common Files

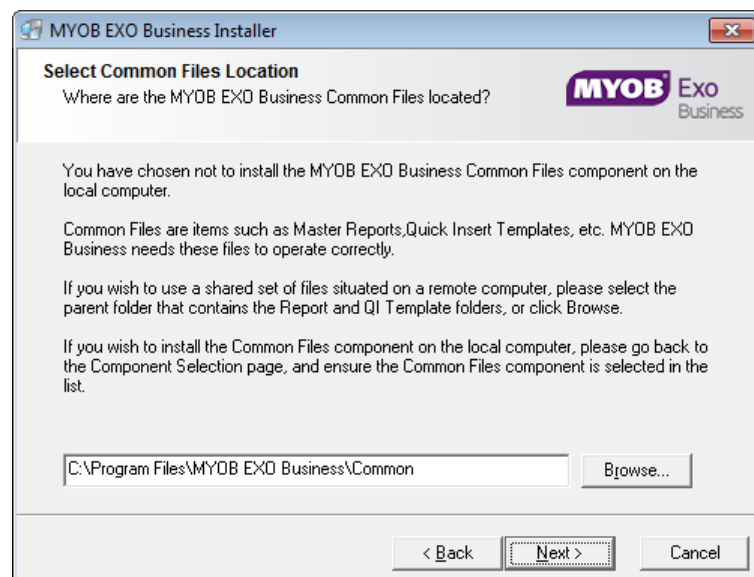
Click **Next** to continue.



6. If you chose to install the MYOB EXO Business Application Modules, click **Browse** to choose the directory where you want to install the program files, then click **Next**.



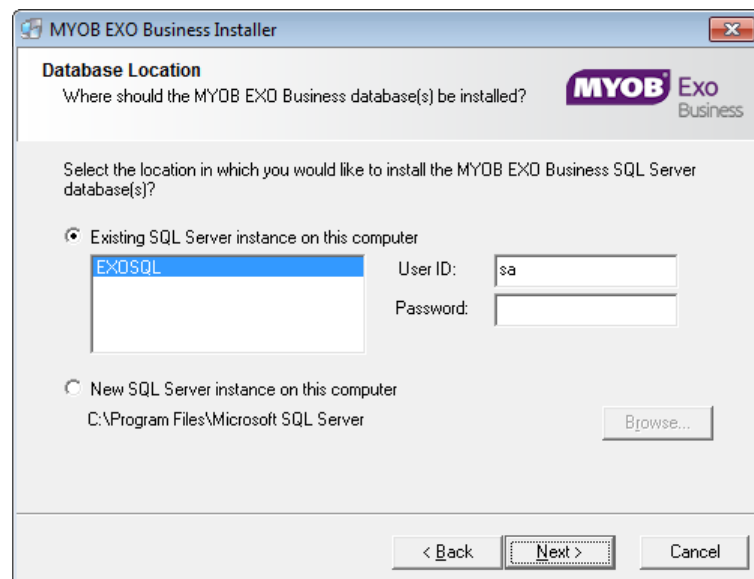
7. If the MYOB EXO Business Common Files are not installed on this PC, click **Browse** to choose the directory where the Common Files are located, then click **Next**.



8. If you chose to install the MYOB EXO Business Database components, you must specify where to install the database:
- To install on an existing SQL Server instance, select the instance and enter a user ID and password for that instance.
 - To create a new instance for the installation, select **New SQL Server instance on this computer**, then click **Browse** to choose the location of the new instance. This will install SQL Server 2008 Express Edition.

Note: See the Known Issues section on page 25 for information on the install prerequisites for SQL Server 2008 R2 SP1.

Click **Next**.



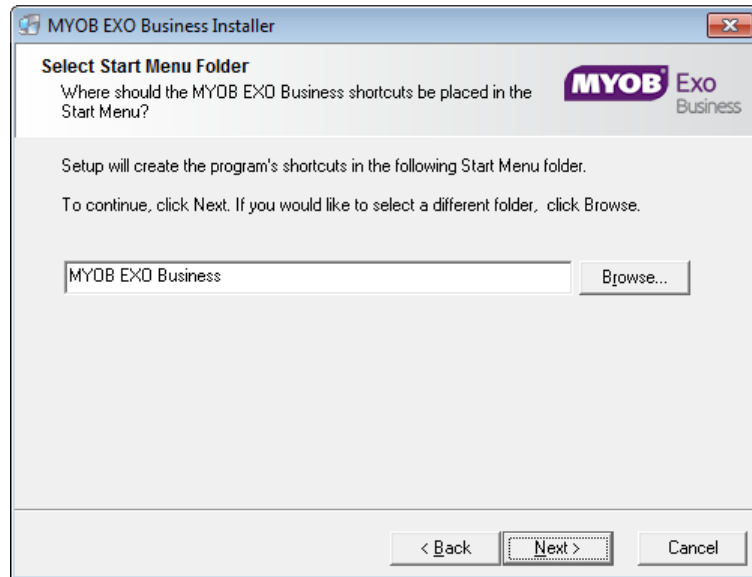
Note: The installer may appear unresponsive while it tries to detect SQL Server instances on the PC (this process may take a minute or more). Do not cancel the installer; simply wait until the detection operation is complete.

If you select to install a new instance of SQL Express, the logon details for the new instance will be:

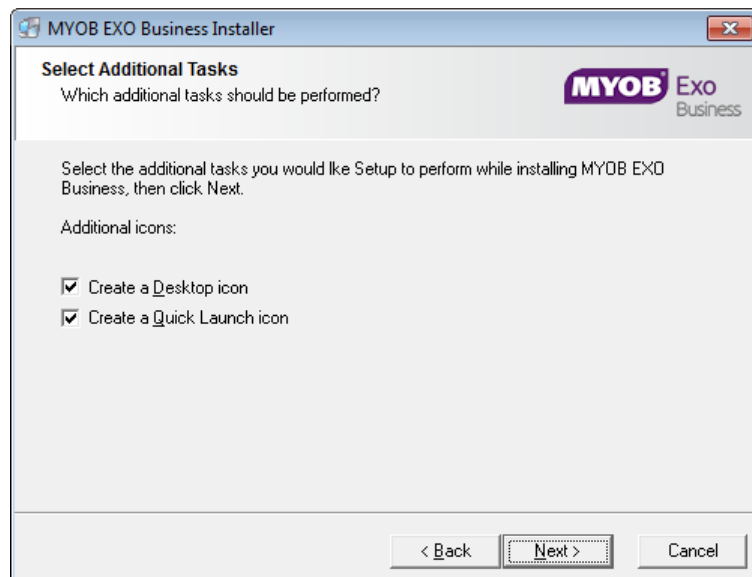
- Username: **sa**
- Password: **\$ExoAdmin7000**

You will need to supply these details when migrating data, or if you want to connect to the SQL Express instance for any other reason.

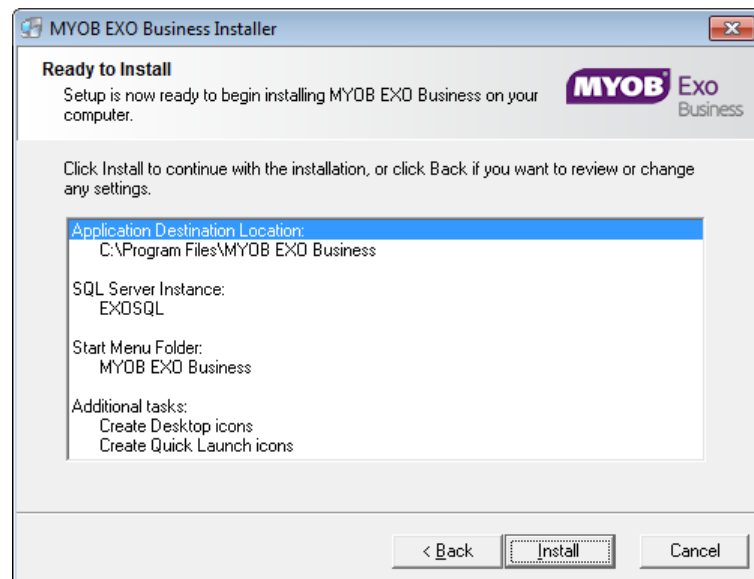
- Click **Browse** to choose where the MYOB EXO Business shortcuts should be located in the Windows Start menu, then click **Next**.



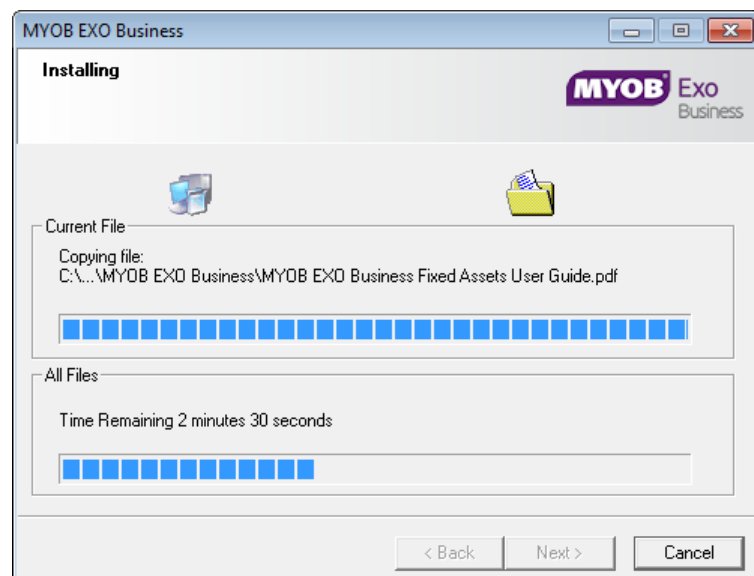
- If you want to create a desktop icon or Quick Launch icon for MYOB EXO Business, tick the relevant box(es), then click **Next**.



11. The installation is ready to begin. Review the details and click **Install** to proceed. If you need to change any details, click **Back** to return to the previous screen and change your selections.



12. The installation progress is displayed.



Note: During installation, other windows may appear if SQL Express is being installed.

13. If you chose to install the application modules but not the database components on this PC, you must enter the details of the database once the installation has completed. Click **Test Connection** to check that the details you have entered work. If the test passes, click **Next**.

Note: Once a computer successfully connects to the database, a Computer profile is created for it in EXO Business Config.

14. The installation is now complete. Choose what to do next and click **Finish**:
 - Run MYOB EXO Business to explore the demonstration database.
 - Run the Configuration Assistant to set up your new MYOB EXO Business database.
 - Return to Windows.

Post-Installation

Once MYOB EXO Business software is installed, it must be configured for use. Optionally, data can be migrated into the EXO Business system from another MYOB product. The configuration and migration processes are detailed in the *MYOB EXO Business Implementation Guide*.

Logging in to EXO Business

New MYOB EXO Business databases are installed with one or more default user accounts. When logging in to EXO Business for the first time, you must supply the following login details.

For a new blank database (EXO_LIVE):

- Default admin user = ExoAdmin
- Default admin password = ExoAdmin

For the demonstration database (EXO_DEMO):

- Default admin user = ExoAdmin
- Default admin password = ExoAdmin
- Default demo user = demo
- Default demo password = DEMO

Note: Passwords are case-sensitive.

Installing EXO Business Services

Once the EXO Business system is set up, you can install supporting services for the EXO API and EXO Email Service using the EXO Business Service Setup Wizard, **EXO Business Services Installer.msi**. This installer is supplied with the main EXO Business installer. It must be run on a server that already has EXO Business installed on it, and must be run from an account with administrative permissions.

To perform the installation:

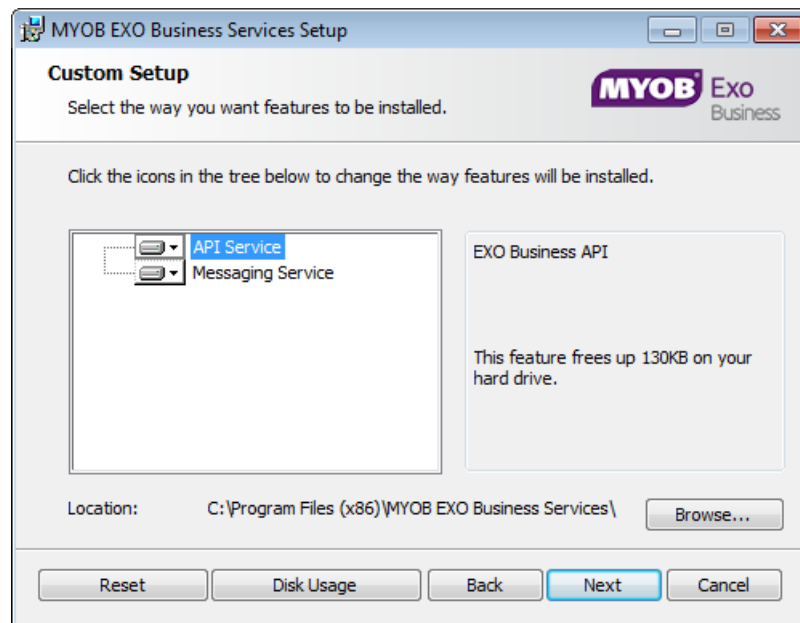
1. Double-click on the installer to run it. The welcome screen appears:



2. Click **Next**. The MYOB EXO End User Licence Agreement is displayed:



3. Tick **I accept the terms in the Licence Agreement** and click **Next** to continue.

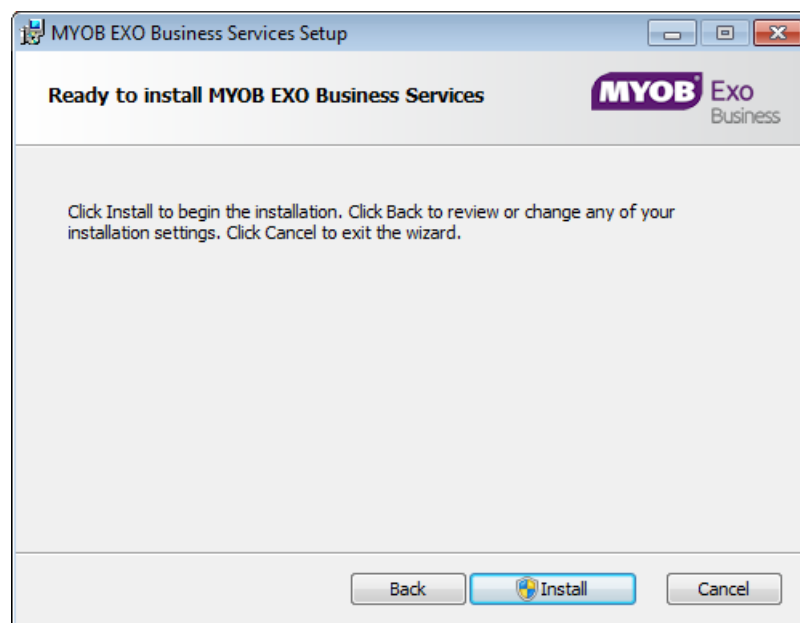


4. Select which components to install. Choose from:

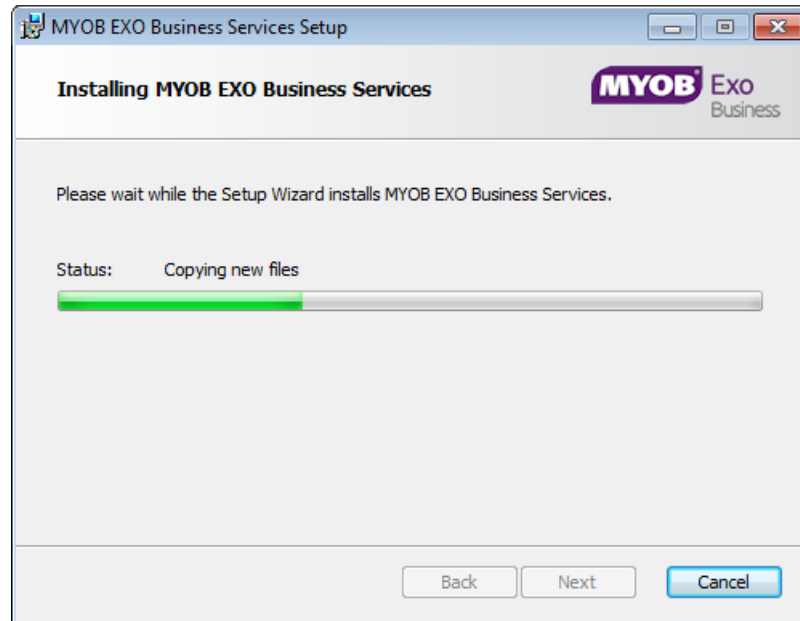
- The EXO API Service
- The EXO Messaging Service

Note: The API configuration utilities are always installed (see “Setting up the Services” on page 15).

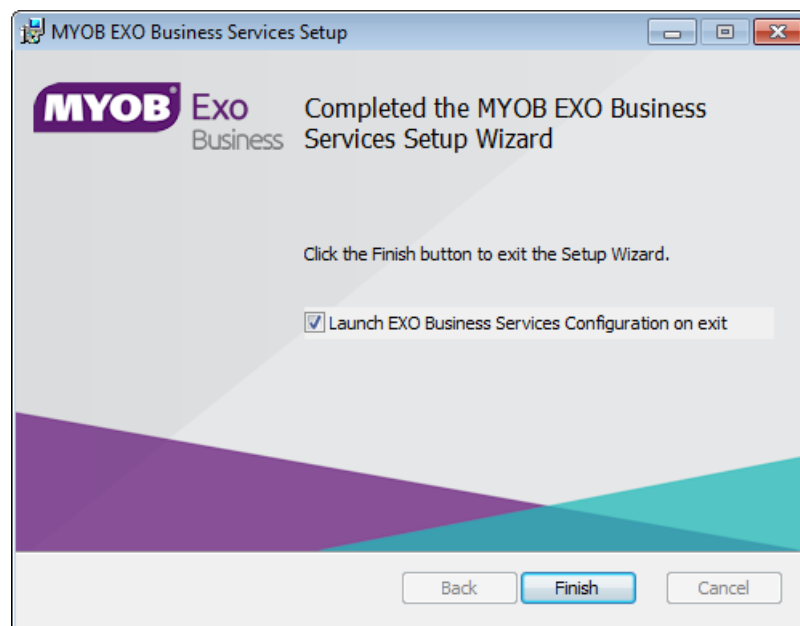
5. The install location is displayed at the bottom of the window. Click **Browse** to choose a different location if necessary.
6. Click **Next**. You are now ready to install the EXO Business services.



- Click **Install** to begin the installation. The progress of the installation is displayed:



- Once the installation is complete, click **Finish** to close the wizard. You can choose to open the EXO Business Service Configuration utility to set up details of the EXO API services.

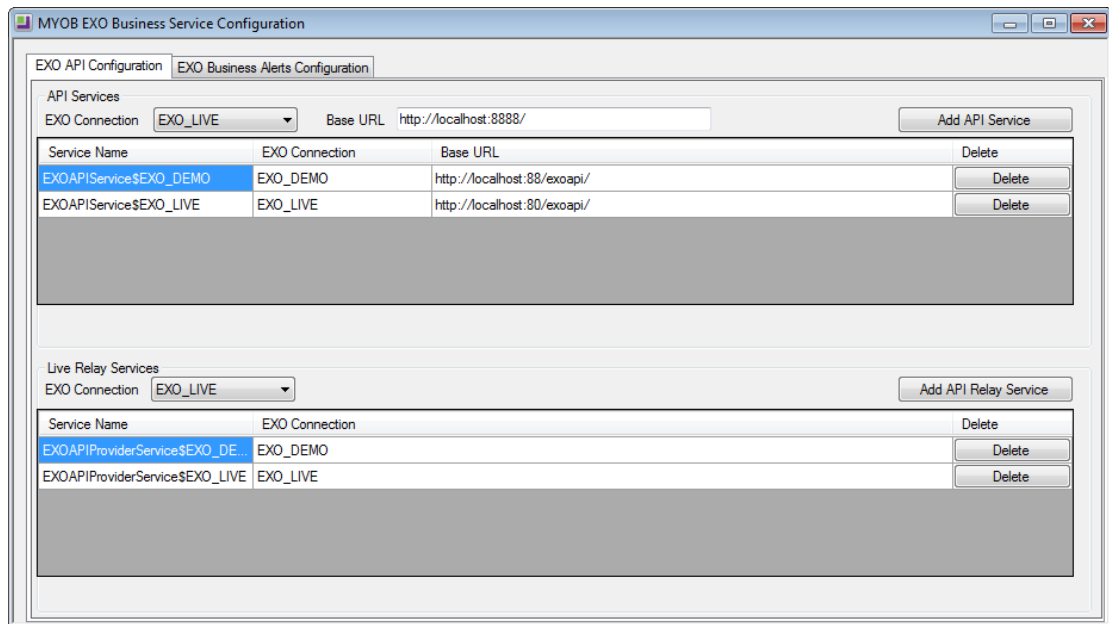


Note: The EXO Business Service Configuration utility is installed in the same location as the EXO API services. You can run the utility (**MYOB.ED.EXO.Cloud.ServiceConfig.exe**) from this location at any time.

Setting up the Services

The EXO Business services must be set up for each EXO Business database connection, using the MYOB EXO Business Service Configuration utility. This utility, **MYOB.ED.EXO.Cloud.ServiceConfig.exe**, can be run immediately after installation, or you can open it from the EXO services install directory at any time.

Note: All setup must be performed on the server that the EXO Business services are installed on, using an account with administrator privileges.



The utility displays configuration settings for the following services:

- EXO API Configuration
 - API Services – this is the main EXO API service.
 - API Provider Services – this service connects the EXO API to the online relay. This service is only needed this if you want to communicate with the EXO API remotely.
- EXO Business Alerts Configuration
 - Message Services – this is the EXO Business messaging (email) service.

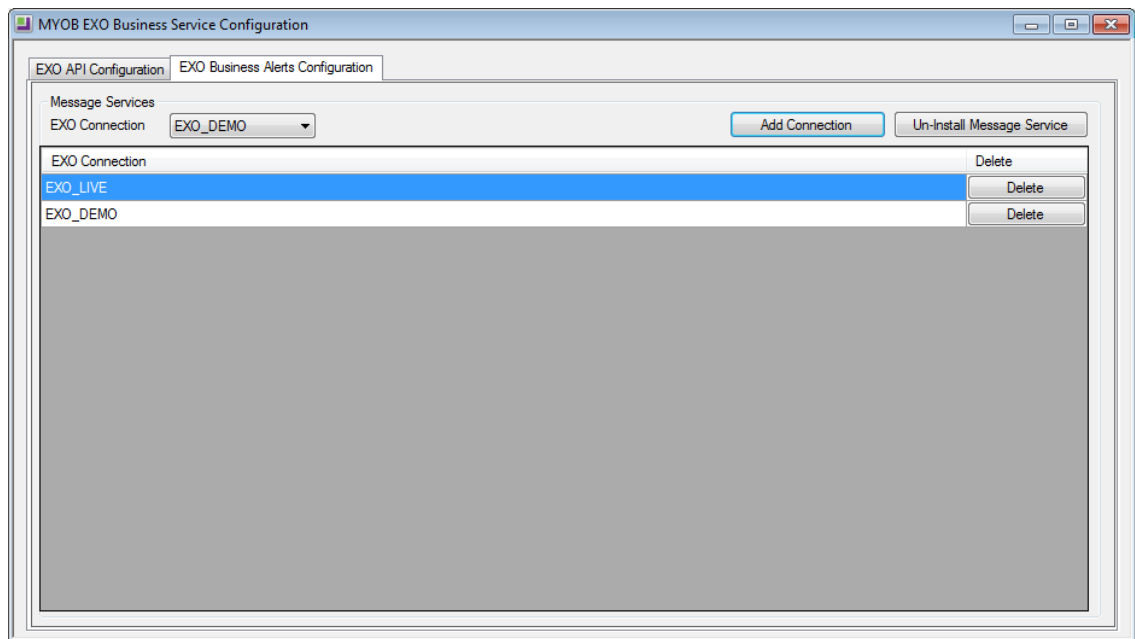
To configure an API service, select an EXO Business database connection, then click the relevant **Add Service** button. For the API Service, you must also enter a **Base URL**, which is the location and port the API is accessible on (the default should be suitable in most cases, unless you want to use a different directory and/or port).

Note: For local API access, ensure that your firewall is configured to allow the relevant ports, services and/or applications.

To validate that the EXO API has been successfully installed and set up, navigate to the Base URL in a web browser or REST client to see a list of available endpoints.

Installation

The configuration process for the messaging service is slightly different; where the API services create a separate instance for each EXO Business database connection, the messaging service has a single instance, which can have multiple connections to it.



To install the messaging service instance, select a database connection and click **Add Connection**. This adds the service and sets up a connection to the selected database. To add new connections, select them from the **EXO Connection** dropdown and click **Add Connection**.

New Features

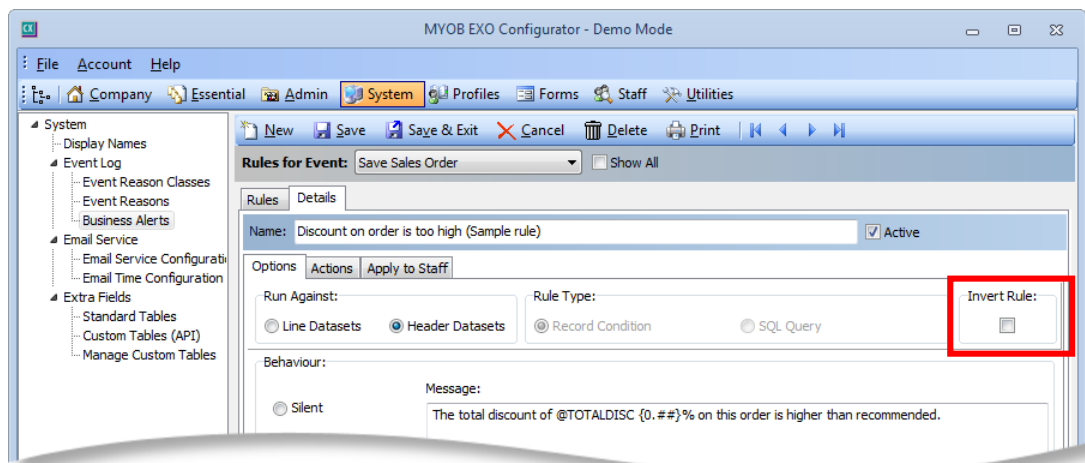
Changes to Supported Platforms

This release adds support for Office 2016 and Windows 10.

Note: The addition of support for Office 2016 affects all EXO Business functions that interface with Outlook 2016 using MAPI, including activity synchronisation.

Updates to Business Alerts

A new **Invert Rule** option is available on the Options tab when editing Business Alerts:



Ticking this option means that the Business Alert will be triggered when the inverse of the rule conditions is met; it effectively places a NOT operation in front of the rule conditions.

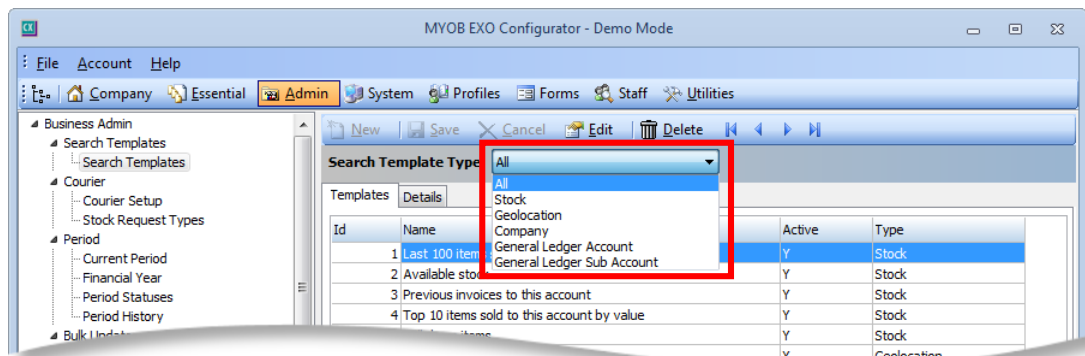
Also, a new @FREIGHTFREE parameter is available for Save Sales Order, Supply Sales Order and Save Debtor Invoice alerts. This parameter returns 'Y' if the transaction is freight free; otherwise it returns 'N'. This parameter can be used in a rule condition such as:

```
((STOCKCODE='FREIGHT') AND (QUANTITY * UNITPRICE <> 0)) OR ('@FREIGHTFREE' = 'Y')
```

Updates to GL Searching

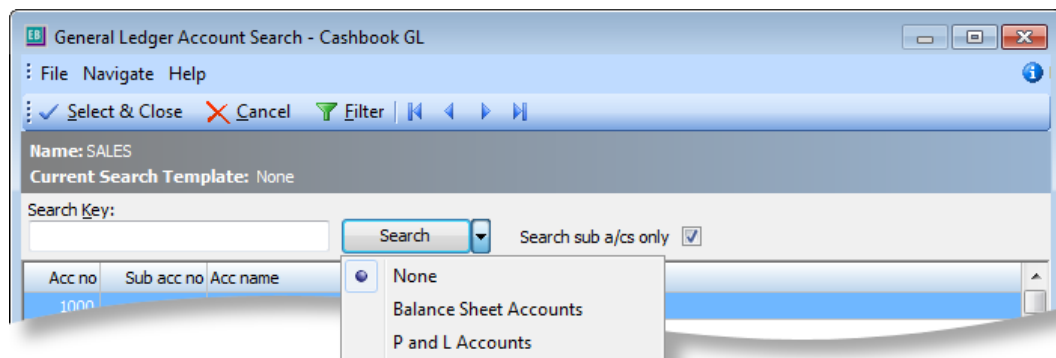
GL Search Templates

This release adds the ability to set up search templates for GL accounts and GL subaccounts. When creating search templates in EXO Business Config, new options for “General Ledger Account” and “General Ledger Subaccount” options are available in the **Search Template Type** dropdown:



Note: The new types are stored in the TYPE field of the SEARCH_TEMPLATES column as GL and GLSUB. In this release, the TYPE field has been redefined from char(1) to varchar(5).

GL search templates are now available on the standard General Ledger Account Search window:



Note: When used in EXO Job Costing, GL search templates work with the **SQL statement to select sales GL accounts** profile setting.

New Column on Subaccounts

A new FULLACCOUNT field has been added to the GLSUBACCS table. This is a computed field that contains the full account code, including the subaccount’s parent account.

Bank Feeds in Bank Reconciliations

This release adds interaction between the Bank Feeds and Bank Reconciliation functions in EXO Finance. Transactions that have been matched in Bank Feeds will be highlighted on the Bank Reconciliation window, indicating that they can be reconciled straight away.

Performing a Bank Feeds Reconciliation

When starting a new bank reconciliation, a new **Bankfeed** option is available on the New Bank Reconciliation window, if bank feeds have been set up for the selected bank account:

The 'New Bank Reconciliation' dialog box shows the following fields and options:

- GL bank account: 04000-00. CURRENT BANK ACCOUNT
- Enter new reconciliation number: 15
- Select unreconciled GL transactions up to and including: Transaction Date (2/12/2015)
- Date of closing bank statement: 2/12/2015
- Reconciliation type: ☒ Bankfeed (highlighted with a red box), ☐ Manual, ☐ CSV
- CSV file: (empty field with a browse button)
- Buttons: OK, Cancel

When performing a Bank Feeds reconciliation, all transactions matched by Bank Feeds are highlighted green:

The 'Bank Reconciliation' window displays the following information:

- GL bank account: 04000-00. CURRENT BANK ACCOUNT
- Reconciliation no: 14
- Mode: EDIT
- GL Balance as at 01.12.2015: 52,648.05
- Bank Statement Opening Balance: 61,592.29
- Bank Statement Closing Balance (at 01.12.2015): 76,025.25
- Reconciliation Type: Bankfeed
- Locked: ☐

Unreconciled GL Transactions as at 01.12.2015

Seq no	Date	Cheque no	Details	Amount	Sel
3734	06.09.2015		Creditor Pymnt - 1. AUCL...	(10.00)	<input type="checkbox"/>
3750	06.09.2015		Debtor Pymnt - 1. KNIGH...	68.24	<input type="checkbox"/>
3753	06.09.2015		Debtor Pymnt - 1. KNIGH...	12.50	<input type="checkbox"/>
3670	06.09.2015	646565	11. AUTOBITS UK CAR PA...	(7,812.50)	<input type="checkbox"/>
3078	06.09.2015	3213467	20. ALL PARTS AUTOMOT...	8,893.47	<input type="checkbox"/>
2972	06.09.2015		0. Dean Fuller	207.55	<input type="checkbox"/>
3218	06.09.2015	3213464	16. TIMOTHY JACKSMAN	210.98	<input checked="" type="checkbox"/>
3228	06.09.2015		0. JOHN EDEN	227.53	<input type="checkbox"/>
3232	06.09.2015		0. AUSTIN MARTON	346.95	<input type="checkbox"/>
3436	06.09.2015	001215	VAN PURCHASE	(15,000.00)	<input type="checkbox"/>
278	06.09.2015	1	1. AUCLAND PART MART	(251.54)	<input type="checkbox"/>
3076	06.09.2015	3213466	2. ALL CAR PARTS	4,541.84	<input type="checkbox"/>
276	06.09.2015				<input type="checkbox"/>

Unreconciled Items from the Bank Statement

Date	Cheque no	Details	Amount	Sel
06/09/2015		Debtor Pymnt - 1. KNIGHT NI...	(68.24)	<input type="checkbox"/>
06/09/2015		Creditor Pymnt - 1. AUCLAND P...	10.00	<input type="checkbox"/>
06/09/2015		Creditor Pymnt - 0. MISC PURCH...	1.00	<input type="checkbox"/>
06/09/2015		Creditor Pymnt - 1. AUCLAND P...	10.00	<input type="checkbox"/>
06/09/2015		Debtor Pymnt - 1. KNIGHT NI...	(12.50)	<input type="checkbox"/>
06/09/2015		Debtor Pymnt - 1. KNIGHT NI...	12.50	<input type="checkbox"/>
06/09/2015		Debtor Pymnt - 1. KNIGHT NI...	(12.50)	<input type="checkbox"/>
06/09/2015		Debtor Pymnt - 1. KNIGHT NI...	(12.50)	<input type="checkbox"/>
06/09/2015	111111	Debtor Pymnt - 2. ALL CAR P...	(10.00)	<input type="checkbox"/>
06/09/2015	3213464	16. TIMOTHY JACKSMAN	(210.98)	<input checked="" type="checkbox"/>
06/09/2015	001215	VAN PURCHASE	15,000.00	<input type="checkbox"/>
06/09/2015		0. AUSTIN MARTON	(346.95)	<input type="checkbox"/>
06/09/2015	1	BRANCH 0	(10.00)	<input type="checkbox"/>
06/09/2015	646565	11. AUTOBITS UK CAR PARTS	7,812.50	<input type="checkbox"/>

Clicking on a green transaction on one side of the window automatically highlights the matched transaction on the other side.

New **Show Matched Items** and **Show Unmatched Items** options are available in the Setup menu to filter the window to show only matched/unmatched transactions.

A new **Select Matched GL Items** is available in the Tools menu. Selecting this option automatically selects all matched transactions, so they can all be reconciled in one operation.

You can also reconcile matched transactions one at a time by double-clicking on them, or select a group of matched transactions using CTRL and reconcile them all at once.

Unmatched Transactions

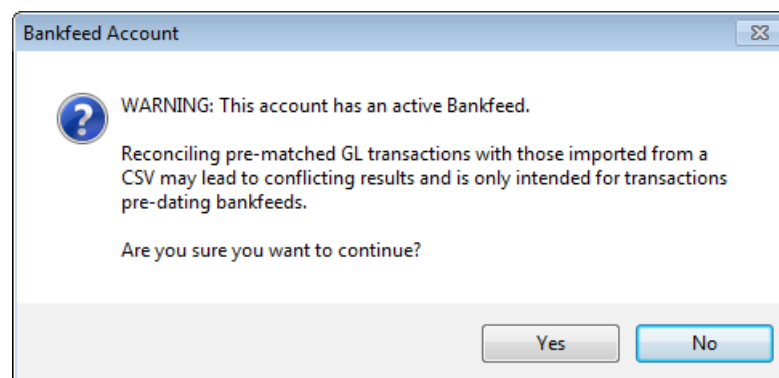
Any transactions that have not been pre-matched by Bank Feeds must be reconciled manually. To do this, click on one or more unmatched GL transactions (hold down CTRL to select multiple transactions), then click on the unmatched bank transaction(s) that relate to the selected GL transaction(s). Click **Reconcile** to remove all selected items from both sides of the Bank Reconciliation window. (If the values do not match, the usual bank reconciliation error message will appear.)

Other Reconciliation Methods

If you perform a Manual or CSV reconciliation on a bank account that has bank feeds defined, this can have an effect on the reconciliation process.

When performing a Manual reconciliation on a bank account that has bank feeds set up for it, pre-matched GL transactions are highlighted in green, as they are for a Bank Feeds reconciliation. Highlighted transactions can be reconciled straight away.

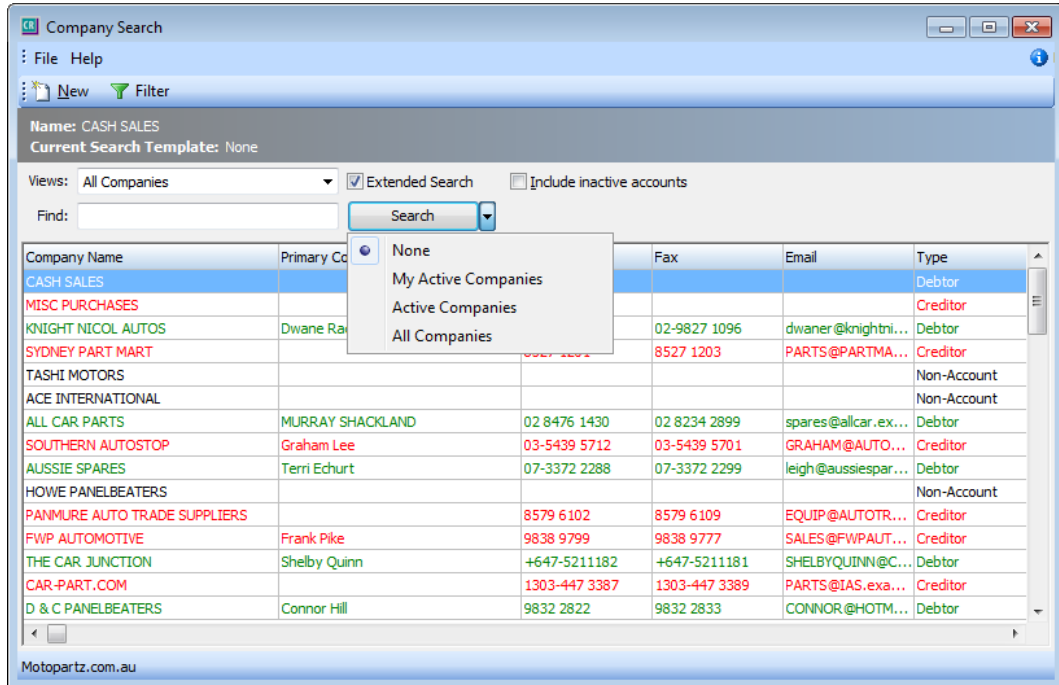
When starting a CSV reconciliation on a bank account that has bank feeds set up for it, a warning message will appear:



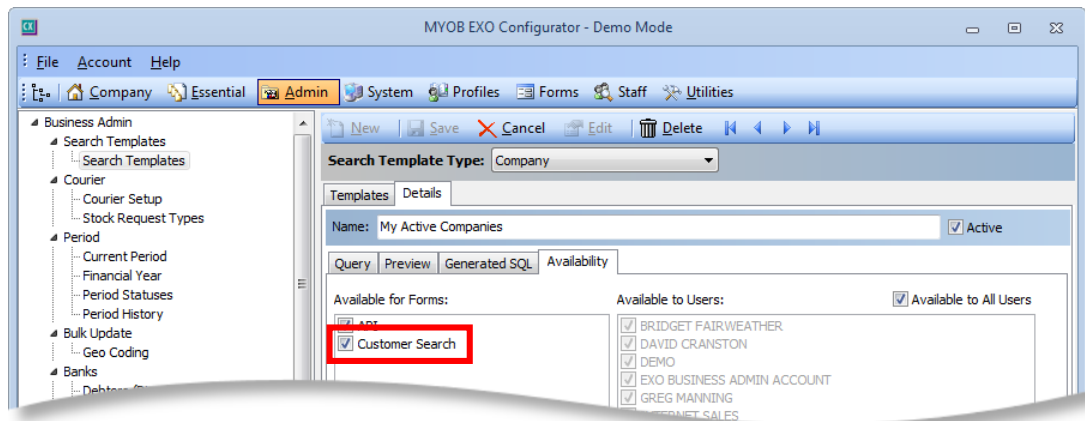
If you choose to continue, only unmatched transactions will appear on the Bank Reconciliation window.

Company Search Templates in EXO CRM

Company search templates can now be used on Company Search windows in the EXO CRM module:



To enable a company search template for use in EXO CRM, make sure the **Customer Search** option is ticked on the Availability tab when setting up the search template:



New Get Profile Functions

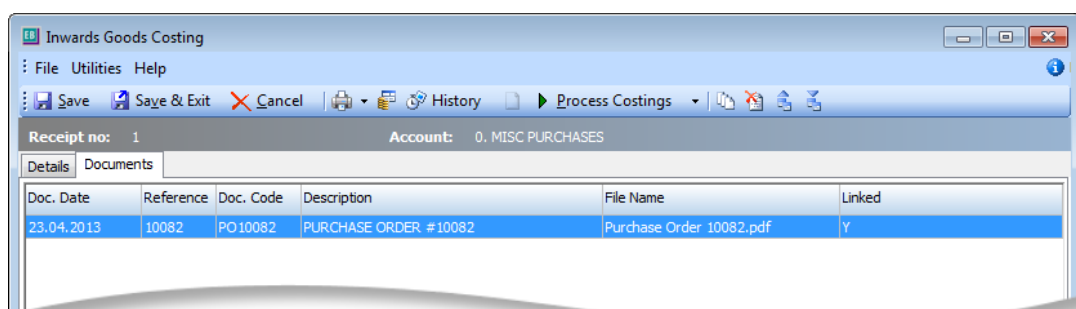
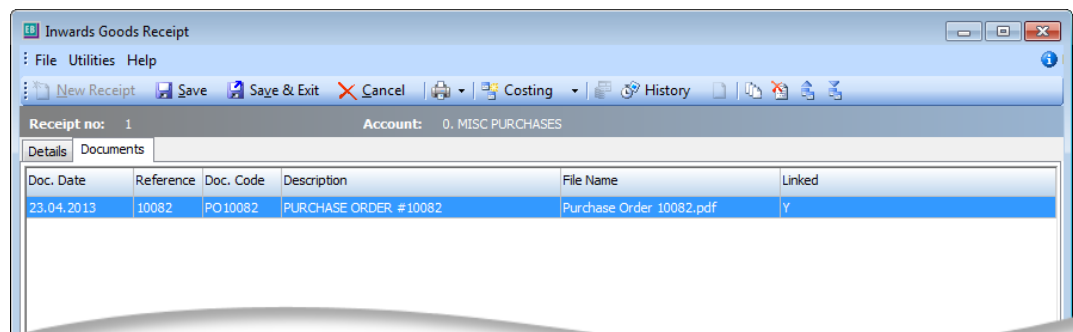
This release adds the following functions to the EXO Business database:

- FN_GET_PROFILE_TYPE
- FN_GET_PROFILE_VALUE
- FN_GET_PROFILE_VALUE_INT
- FN_GET_COMPUTER_PROFILE_ID
- FN_GET_SECURITY_PROFILE_ID
- FN_GET_USER_PROFILE_ID

These functions are equivalent to the existing Get Profile stored procedures, but as functions, they are more useful than the stored procedure equivalents—they can be called from within a computed field or stored function, for example.

Documents on Inwards Goods

The Inwards Goods Receipt and Inwards Goods Costing windows now have Documents tabs:



These tabs behave in the same way as the Documents tabs that are available on other records. You can add and remove documents using the standard document toolbar buttons, and you can attach a document by dragging and dropping it onto the Documents tab.

When creating an Inwards Goods Receipt, any documents attached to the Purchase Order(s) being receipted will be copied to the Documents tab of the receipt.

Integrated Cashbook Update

A **Subledger Account** column has been added to the Integrated Cashbook:

The screenshot shows the 'Cashbook Entry with GL, Debtors & Creditors Integration' window. The 'Subledger A...' column in the table is highlighted with a red rectangle.

This brings the Integrated Cashbook window in line with the Bank Feeds Transaction Entry window that was introduced with Bank Feeds in EXO Business 2015.4.

New Zealand Business Number

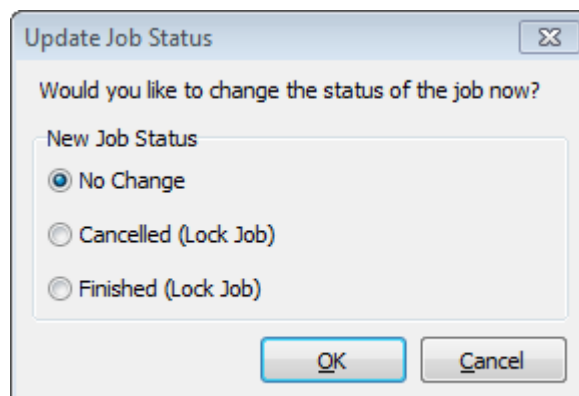
For New Zealand installations, it is now possible to enter a New Zealand Business Number on the Company Details section in the EXO Configurator:

The screenshot shows the 'MYOB EXO Configurator - Demo Mode' window, specifically the 'Company Details' section. The 'NZ Business Number' field is highlighted with a red rectangle.

Job Costing Updates

Workflow Constraints

Workflow constraints on Job Statuses are now applied when invoicing and crediting jobs. When a job is invoiced or credited, a window appears asking the user if they want to change the job's status; this window now displays only statuses that are allowed by the workflow constraints on the job's current status. The window also displays "(Lock Job)" next to a status if changing the job to that status will cause it to become locked, i.e. read-only:



Attaching Multiple Lines to a Kit

It is now possible to select multiple lines and attach them to an existing kit on a job in one operation. The option **Marked Lines > Attach to Kit** has been added to the right-click context menu.

Writing off Lines when Crediting a Job

When a credit note is generated from a job, the system can now ask the user if the credited lines should be written off automatically, depending on the new **Write off job lines when generating a credit note** User-level profile setting. If this is set to "Prompt", the user will be asked if they want to write off the affected lines; if it is set to "Never", lines will have to be written off manually.

Update to the Ledger Posting Process

By default, when posting balance sheet transactions, the branch is set to the default balance sheet branch, as configured in the Business Essentials > General Ledger section of EXO Business Config. A new **Retain the transaction branch on balance sheet GL transactions** profile setting allows the transaction branch detail to be transferred on balance sheet GL transactions when posting to GL, rather than setting all balance sheet entries to the default branch for balance sheet.

Note: Enabling this setting means that the trial balance by branch will not balance.

Resolved Issues

EXO Business Core

Service Request ID	Description
11377141392 14431615784 12320631738 12153842572 11377372163 11377372131 11377372080 11377371897 11377371854 11377371831 11377371817 11377371694 11377371661 11377141398	The Invoice Search window now defaults to searching across all branches.
12059944410 12056903681 11290128879 18681875021 11912258159 11202721534	After entering a new line on a Creditors Invoice, the line periscope was not available until the user changed to a different line. This issue occurred when EXO Business was run in Windows Aero mode, i.e. running executables with the /AERO flag. This has been resolved.
18950850063 18912108901 116995863992 112791584091	The Taxable Payments Annual Reports (CITP_TaxReturn.CLF and CITP_Details.CLF) did not calculate GST correctly. This has been resolved; updated versions of these reports have now been added to the default library of EXO Business reports.
-	It was not possible to process auto-reversing journals in a previous period. This has been resolved.
-	For some instances of the General Ledger Account Search window, after entering text and pressing TAB to open the window, the text would not appear in the Search Key field. This has been resolved.
-	After opening a Purchase Order and then closing it, the Purchase Order search screen reappeared, but with the toolbar of the Purchase Order window instead of the search window toolbar. This has been resolved.

EXO CRM

Service Request ID	Description
115620626287 115592003731	Adding the EXO Business CRM module to an installation would delete the TASKS_VIEW database view. This has been resolved.
124662040394 124591122891 125608044079 123874321311	It was not possible to set a reminder for a newly created activities; users had to close the activity and re-open it to be able to edit reminders. This has been resolved.

Known Issues

The following issues have been identified as requiring end-user attention in this release.

Installation/Upgrade Issues

- If you are using the MYOB EXO Business Installation Wizard to install an instance of SQL Express, the following must be present on the PC:
 - .NET Framework 3.5 SP1 – you can download this from:
<http://go.microsoft.com/fwlink/?LinkId=120550>
 - Windows Installer 4.5 – you can download this from:
<http://go.microsoft.com/fwlink/?LinkId=123422>
 - Windows PowerShell 1.0 – you can download this from:
<http://go.microsoft.com/fwlink/?LinkId=120552>
- Due to security settings imposed by Windows, CHM Help files cannot be viewed from a remote location—this means that you can only view the EXO Business CHM Help files if they have been installed on the local PC. See [Microsoft Knowledge Base article 892675](#) for more information on this issue and suggested workarounds. (This issue does not apply if you are viewing online Help files on the EXO Business Education Centre.)

Demo Data Issues

The stored procedure SP_DEMO_DATA_DATE_UPDATER, which updates the data in demo databases to the current date, was updated in EXO Business 8.4. This stored procedure is only available in the EXO_DEMO database, which means that any existing demonstration databases used by partners will not be able roll their demo data forward; these databases will need to be re-created based on the updated EXO_DEMO database in order to use the updated SP_DEMO_DATA_DATE_UPDATER procedure.

Job Costing Resource Issues

When a resource allocation is created, an Activity for the relevant staff member is automatically created in the EXO Business system; however, if the resource is not associated with a staff member, the Activity will not appear on the Activity Search widget on the Task Scheduler tab.

As a workaround, a dummy staff account can be created to associate non-staff Resources with.

SQL Server 2012 Issues

All versions of SQL server 2012 exhibited a subtle, but now well-known change in default behaviour with regard to identity or auto number sequences. In MYOB EXO Business, this would be experienced as an unexpected anomaly where number sequences could apparently spontaneously jump by increments of 1000 if the SQL server was restarted.

This behaviour was reversed in SQL server 2014, but no known solution exists for completely preventing this behaviour in any versions of SQL server 2012, other than to upgrade to SQL server 2014 to completely eliminate the potential for this issue to occur.

SQL Server 2008 R2 prior to SP3

MYOB EXO Business uses a SQL Server feature called Common Language Runtime Integration. This feature was disabled by default in versions of SQL Server 2008 R2 prior to Service Pack 3. If this feature is not enabled, users may encounter the following error during the upgrade process:

Updating server configuration: 'clr enabled'

Appendix 1: Profile Settings

The following profile settings have been added or modified in this release.

Name	Profile Name	Level	Description	Default	Refer
Write off job lines when generating a credit note	JC_WRITEOFF_JOBLINES	User	When a credit note is generated from a job, the system will ask if the credited lines should be written off automatically, if this setting is set to "Prompt". If it is set to "Never", lines will have to be written off manually.	Prompt	page 24
Retain the transaction branch on balance sheet GL transactions	POST_LINE_GL_BRANCHNO_TO_BS	Company	<div>When this setting is enabled, the transaction branch detail will be transferred on balance sheet GL transactions when posting to GL, rather than setting all balance sheet entries to the default branch for balance sheet.</div> <div>Note: Enabling this setting means that the trial balance by branch will not balance.</div>	Disabled	page 24